



- Road

— County Road

— Stream

— Source Protection Region Boundary

— Lake
- Impervious Surface (percent/sq km)**

<1%

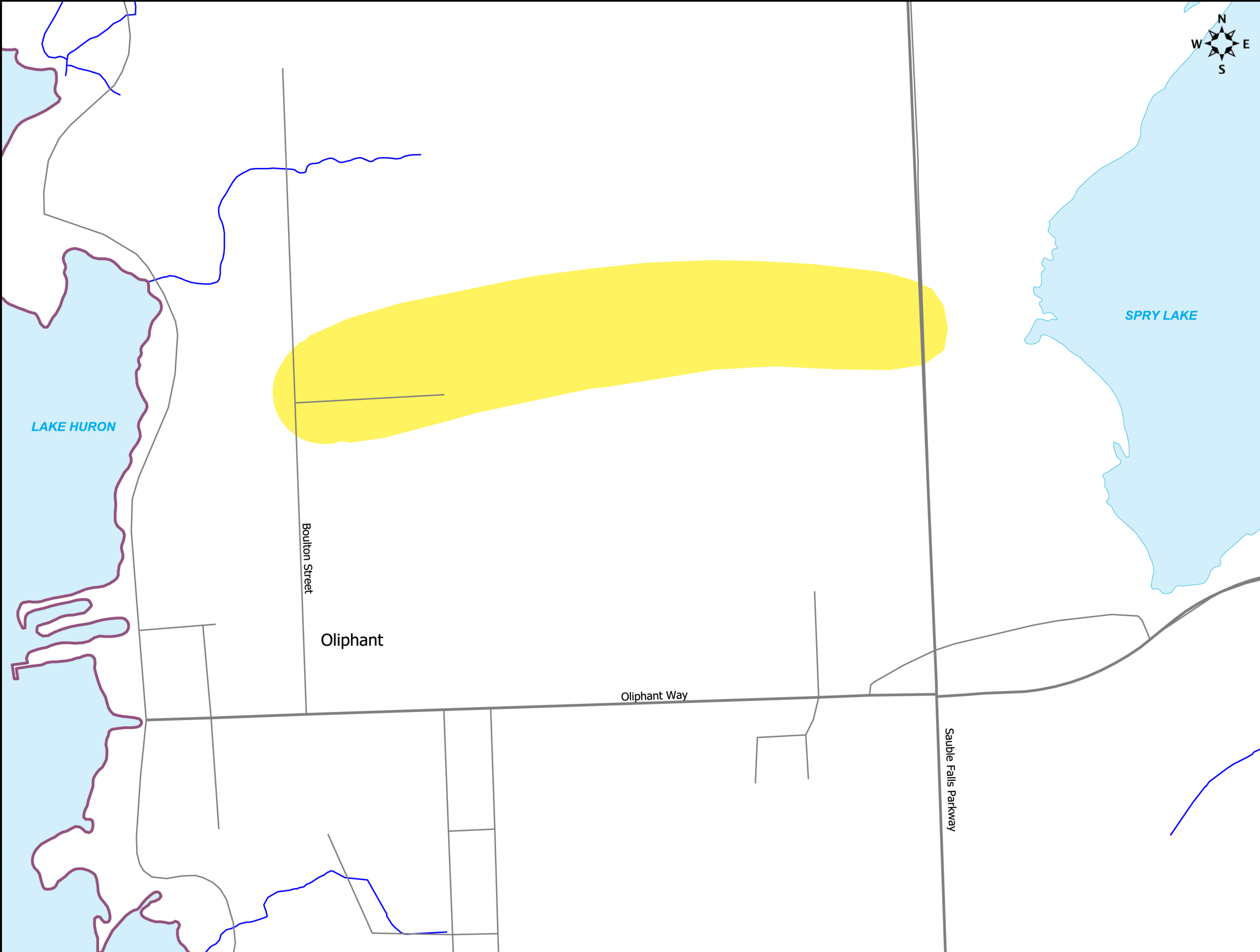
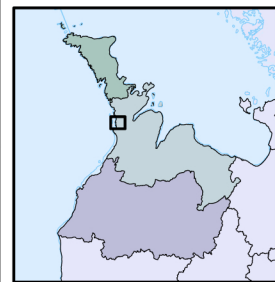
1% - <8%

8% - <80%

=>80%

Base mapping produced under license with the Ontario Ministry of Natural Resources © Queen's Printer for Ontario, 2009. The use of these data does not constitute an endorsement by the MNR or the Ontario Government of such data.

Impervious surface delineated by DWSP staff.



**MAP 4.8.G1.4 IMPERVIOUS SURFACE - OLIPHANT**  
**Water Quality Threats and Issues - Town of South Bruce Peninsula**

0250 m

Projection: UTM NAD 83 Zone 17

1 : 7,500