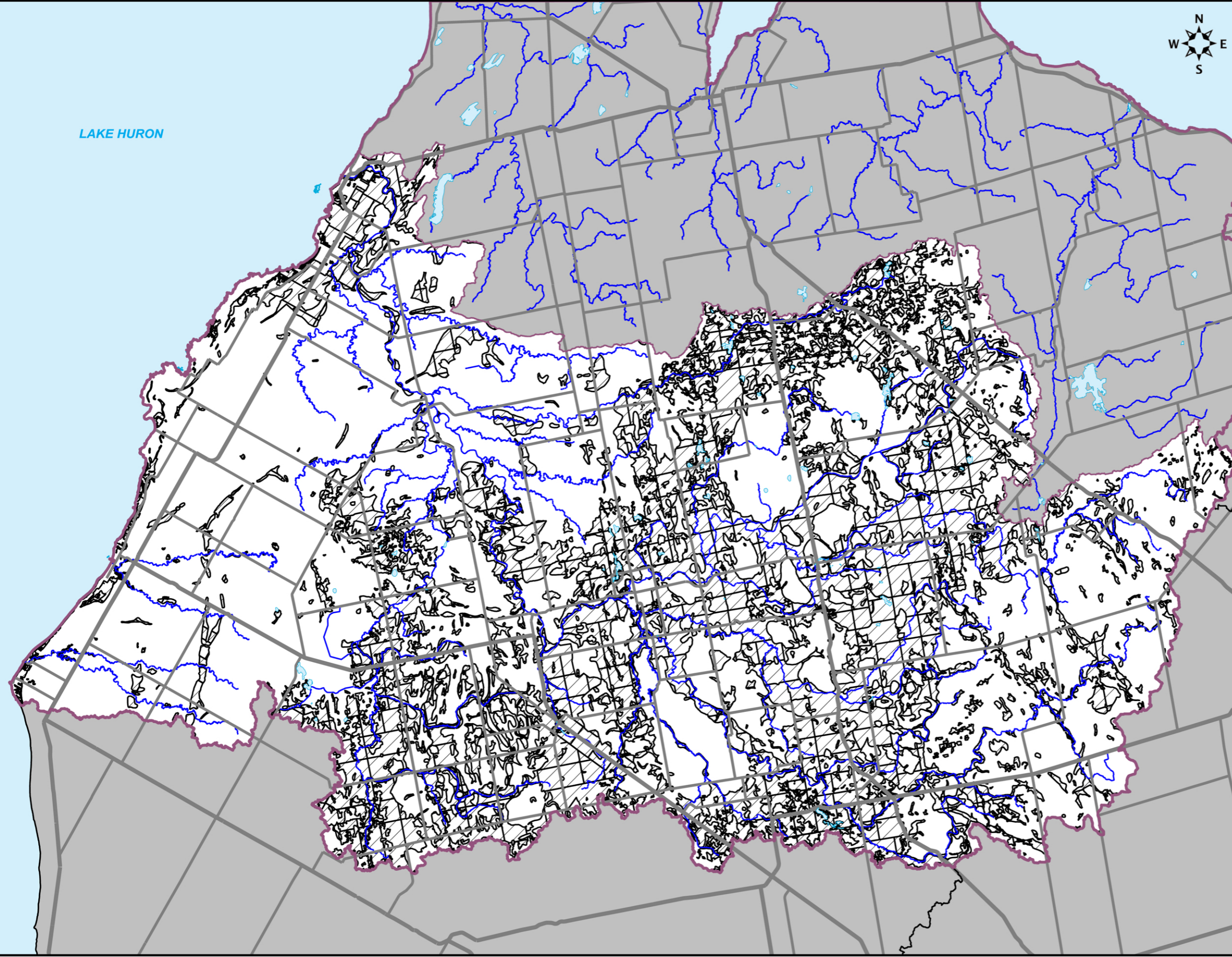




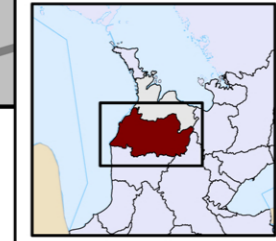
LAKE HURON



- County Road
- Highway
- Stream
- Source Protection Area Boundary
- Source Protection Region Boundary
- Neighbouring Source Protection Area
- Lake
- Significant Groundwater Recharge Area

Base mapping produced under license with the Ontario Ministry of Natural Resources © Queen's Printer for Ontario, 2009. The use of these data does not constitute an endorsement by the MNR or the Ontario Government of such data.

Significant Groundwater Recharge Areas were delineated by DWSP staff using the Hydrologic Response Units created by AquaResource Inc. as part of the Saugeen, Grey Sauble, Northern Bruce Peninsula Conceptual Geological Model and Three Dimensional Groundwater Flow Model Project, 2005/2006.



**MAP 3.11 SIGNIFICANT GROUNDWATER RECHARGE AREAS**

Water Quantity Stress Assessment



Projection: UTM NAD 83 Zone 17

1 : 360,000

Disclaimer: This map has been compiled from various sources and is intended for illustrative purposes only. It should not be used as a precise indicator of routes nor as a guide to navigation.