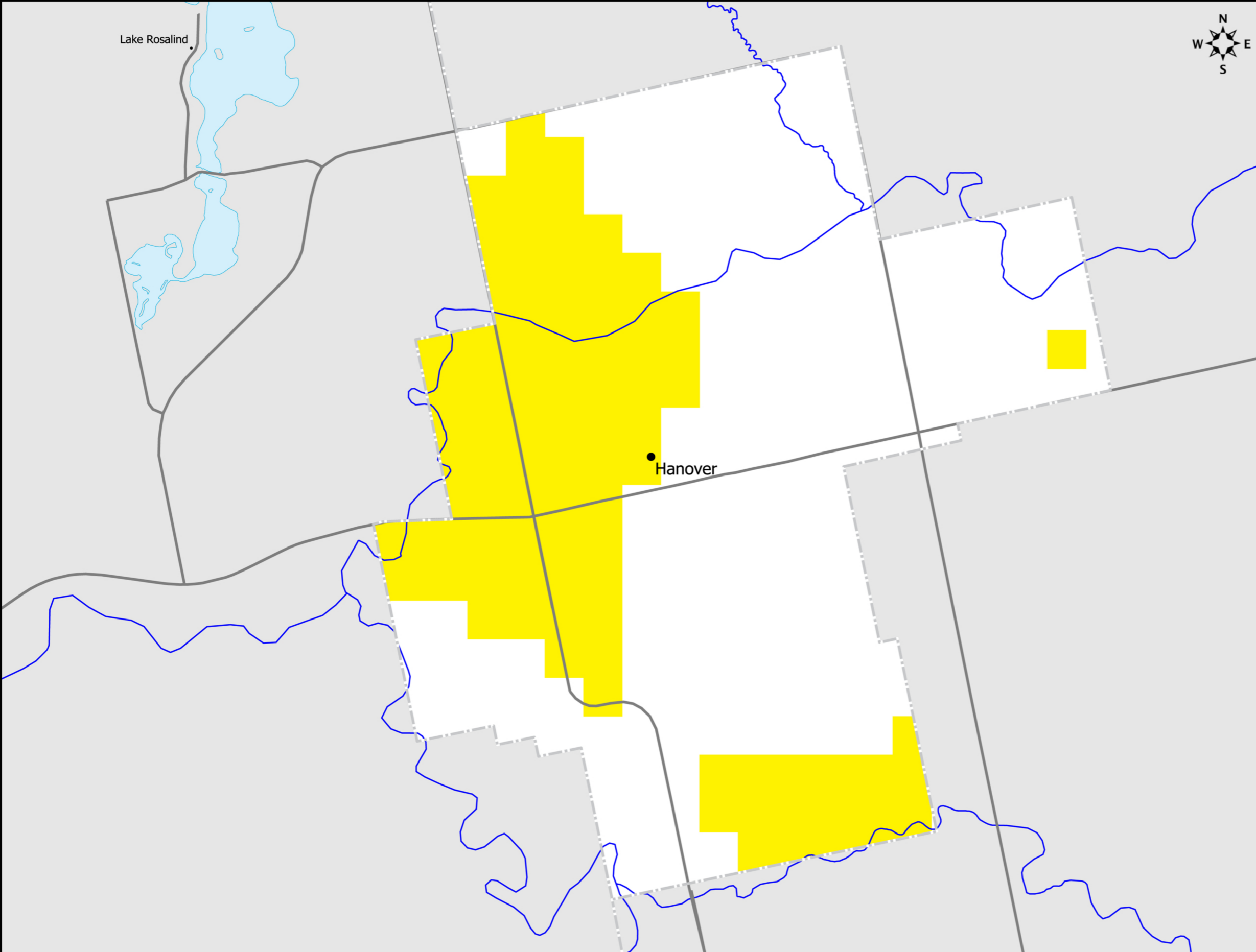


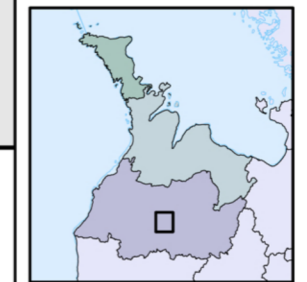
Lake Rosalind



- Community
 - Town/Village
 - City
- County Road
 - Highway
 - Stream
 - - - County Boundary
 - ▨ Neighbouring Municipality
 - ▭ Lake
- HVA Vulnerability**
- 2
 - 4
 - 6
 - 8
 - 10

Base mapping produced under license with the Ontario Ministry of Natural Resources © Queen's Printer for Ontario, 2009. The use of these data does not constitute an endorsement by the MNR or the Ontario Government of such data.

HVA Vulnerability delineated by DWSP staff using the ISI.



0 1 km

Projection: UTM NAD 83 Zone 17

1 : 20,000

MAP 4.5.M3 HIGHLY VULNERABLE AQUIFER VULNERABILITY

Water Quality - Town of Hanover

Disclaimer: This map has been compiled from various sources and is intended for illustrative purposes only. It should not be used as a precise indicator of routes nor as a guide to navigation.

November 28, 2011