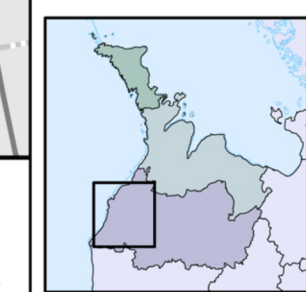




- Community
 - Town/Village
 - City
- County Road
 - Highway
 - Stream
 - Source Protection Area Boundary
 - Source Protection Region Boundary
- ▨ Neighbouring Municipality
 - ▨ Neighbouring Source Protection Area
 - ▨ Lake
- Livestock Density (nutrient units/acre)**
- Orange: < .5
 - Green: .5 - 1
 - Blue: > 1

Base mapping produced under license with the Ontario Ministry of Natural Resources © Queen's Printer for Ontario, 2009. The use of these data does not constitute an endorsement by the MNR or the Ontario Government of such data.

Livestock Density delineated by DWSP staff.



MAP 4.7.M7 HIGHLY VULNERABLE AQUIFER LIVESTOCK DENSITY

Water Quality - Municipality of Kincardine

Disclaimer: This map has been compiled from various sources and is intended for illustrative purposes only. It should not be used as a precise indicator of routes nor as a guide to navigation.