

• Community

• Town/Village

● City

— County Road

— Highway

— Stream

— County Boundary

— Source Protection Area Boundary

— Source Protection Region Boundary

Neighbouring Municipality

Neighbouring Source Protection Area

Lake

**HVA Vulnerability**

2

4

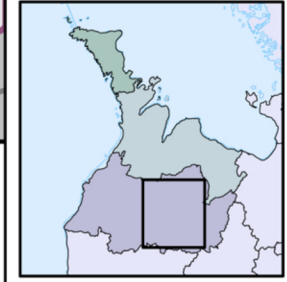
6

8

10

Base mapping produced under license with the Ontario Ministry of Natural Resources © Queen's Printer for Ontario, 2009. The use of these data does not constitute an endorsement by the MNR or the Ontario Government of such data.

HVA Vulnerability delineated by DWSP staff using the ISI.



MAP 4.13.M3 HIGHLY VULNERABLE AQUIFER VULNERABILITY

Water Quality - Municipality of West Grey

Disclaimer: This map has been compiled from various sources and is intended for illustrative purposes only. It should not be used as a precise indicator of routes nor as a guide to navigation.