

- Community
- Town/Village
- City
- County Road
- Highway
- Stream
- - - County Boundary
- Source Protection Area Boundary
- Source Protection Region Boundary

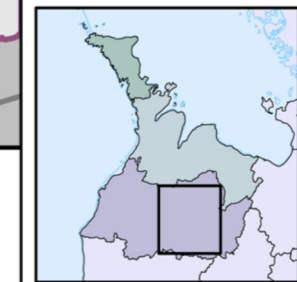
- Neighbouring Municipality
- Neighbouring Source Protection Area
- Lake

Impervious Surface (percent/sq km)

	<1%
	1% - <8%
	8% - <80%
	=>80%

Base mapping produced under license with the Ontario Ministry of Natural Resources © Queen's Printer for Ontario, 2009. The use of these data does not constitute an endorsement by the MNR or the Ontario Government of such data.

Impervious surface delineated by DWSP staff.



MAP 4.13.M5 IMPERVIOUS SURFACE

Water Quality - Municipality of West Grey

0 5 km

Projection: UTM NAD 83 Zone 17 1 : 175,000

Disclaimer: This map has been compiled from various sources and is intended for illustrative purposes only. It should not be used as a precise indicator of routes nor as a guide to navigation.