

- Community
- Town/Village
- City

- County Road
- Highway
- Stream
- - - County Boundary
- Source Protection Area Boundary
- Source Protection Region Boundary

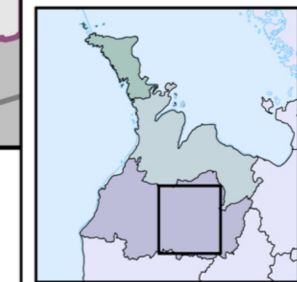
- ▨ Neighbouring Municipality
- ▨ Neighbouring Source Protection Area
- ▨ Lake

**Livestock Density (nutrient units/acre)**

- Orange: < .5
- Green: .5 - 1
- Blue: > 1

Base mapping produced under license with the Ontario Ministry of Natural Resources © Queen's Printer for Ontario, 2009. The use of these data does not constitute an endorsement by the MNR or the Ontario Government of such data.

Livestock Density delineated by DWSP staff.



0 5 km Projection: UTM NAD 83 Zone 17 1 : 175,000

**MAP 4.13.M7 HIGHLY VULNERABLE AQUIFER LIVESTOCK DENSITY**

Water Quality - Municipality of West Grey

Disclaimer: This map has been compiled from various sources and is intended for illustrative purposes only. It should not be used as a precise indicator of routes nor as a guide to navigation.