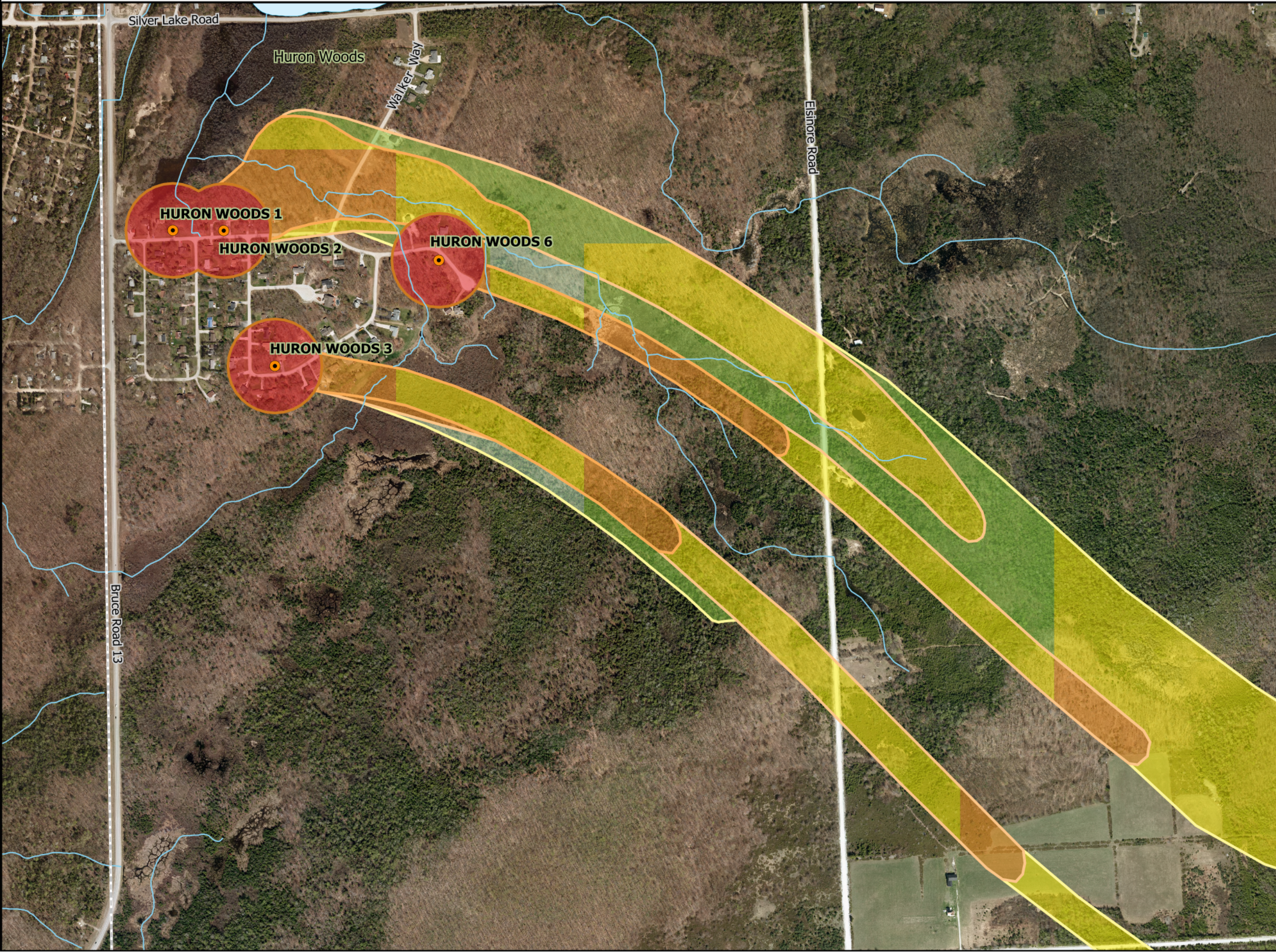


MAP 5.2.SBP.HW.1 HURON WOODS WATER SUPPLY WORKS WHPA

Approved Source Protection Plan



- Municipal Well
- Watercourse
- Municipal Boundary
- Lake
- Wellhead Protection Area**
 - WHPA-A (100 m Radius)
 - WHPA-B (2 Year Time-of-Travel Capture Zone)
 - WHPA-C (5 Year Time-of-Travel Capture Zone)
 - WHPA-D (25 Year Time-of-Travel Capture Zone)

- Wellhead Vulnerability Score**
 - 10
 - 8
 - 6
 - 4
 - 2



1 : 8,000

Projection:
UTM NAD 83 Zone 17



Base mapping produced under License with the Ontario Ministry of Natural Resources. © Queen's Printer for Ontario and its licensors. [2014] The use of these data does not constitute an endorsement by the MNR or the Ontario Government of such data.

Wellhead Protection Areas delineated by Schlumberger Canada Limited, Conestoga-Rovers & Associates and DWSP Staff.
Vulnerability Scores delineated by DWSP Staff.

Data supplied under Licence by Members of the Ontario Geospatial Data Exchange. © Queen's Printer for Ontario and its licensors. [2010]
May Not be Reproduced without Permission.
THIS IS NOT A PLAN OF SURVEY.

Disclaimer: This map has been compiled from various sources and is intended for illustrative purposes only. It should not be used as a precise indicator of routes nor as a guide to navigation.